

Digital Full Colour Multi Function Printer

**RICOH**  
imagine. change.

# RICOH MP C6503SP MP C8003SP

✔ Printer    ✔ Copier    ✔ Facsimile    ✔ Scanner



RICOH  
MP C6503SP  
**65** ppm  
Monochrome  
Full Colour

RICOH  
MP C8003SP  
**80** ppm  
Monochrome  
Full Colour

## Be more productive by working smarter

How much do you value intelligent technology? Find out with the customizable RICOH® MP C6503SP/ MP C8003SP colour digital MFP. Simplify everyday document management tasks and move information quickly and accurately — so you can make smarter decisions that improve productivity and grow your business. Produce a wider range of high-quality media in general office environments at up to 80 pages per minute (ppm). Distribute documents and images instantly via convenient Scan-to capabilities. Take advantage of advanced security features to protect your best ideas. With our Workstyle Innovation Technology, you can create your own one-touch automated shortcuts on the dynamic Smart Operation Panel. Or, use your smartphone, tablet or laptop to manage the same tasks on the go.

- Produce colour or black-and-white documents at up to 80 ppm
- Smart Operation Panel with 10.1" touch display helps increase productivity and improves workflow
- New Human Detection Sensor technology saves your time waiting for the device to warm-up
- Print and share information from your personal mobile device
- Create more colour documents in-house to reduce outsourcing costs
- Conserve energy and paper with environmentally friendly features



## Meet every demand every time

### Go all in with all-in-one performance

Every day brings something different, but at least you will know how to get it done quickly with the reliable MP C6503SP/MP C8003SP. It includes new Human Detection Sensor that wakes up the control panel instantly from sleep mode as you touch on the screen, so you can start multitasking immediately. Take advantage of output speeds that reach up to 80 pages per minute to print and copy notes, invoices, handouts and other forms with incredible speed and precision. Scan originals via a Single Pass Document Feeder (SPDF) and choose from a wide range of Scan-to capabilities to share them electronically in only moments.



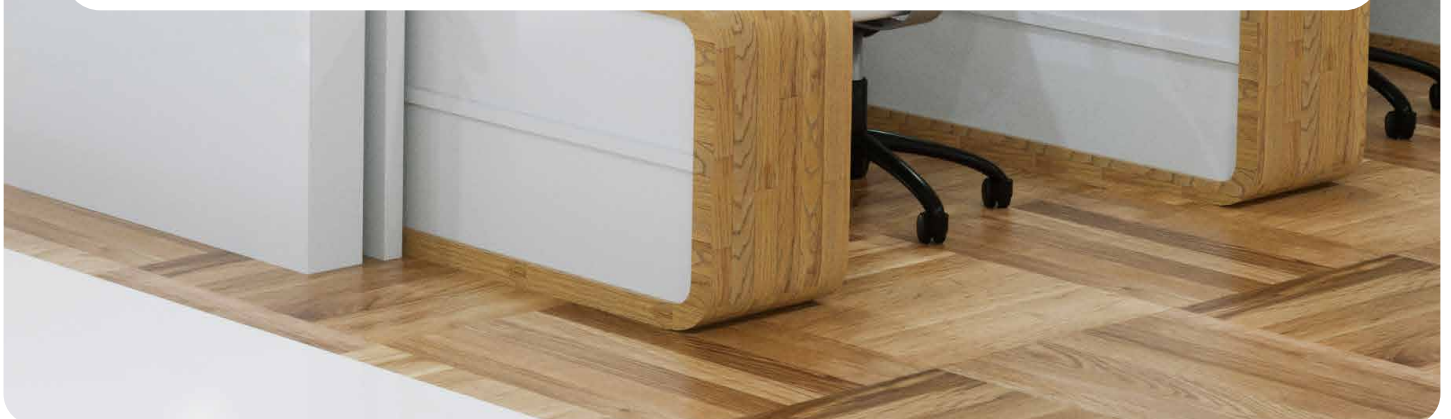
### Perform more tasks in more places

You can download the RICOH Smart Device Connector app to control all print, copy, scan and fax functions from your Android® or iOS® device. Access digital files directly from your device or Cloud applications and send them to the MFP. Scan originals at the MFP and send them to your device electronically as PDFs that you can carry with you. Or, send them directly to contacts in your personal address book in a easy way.



### Impress with more media options

Give every audience what it wants. Expand paper capacity up to 8,100 sheets to work continuously. Choose from multiple paper trays, including tandem trays, and load the device with the right stocks for the right audience. Print black-and-white output or compelling full-colour brochures, proposals and more with image quality up to 1200 x 4800 dpi. You can even produce colourful banners up to 1.26 meters long.



# Use technology intelligently

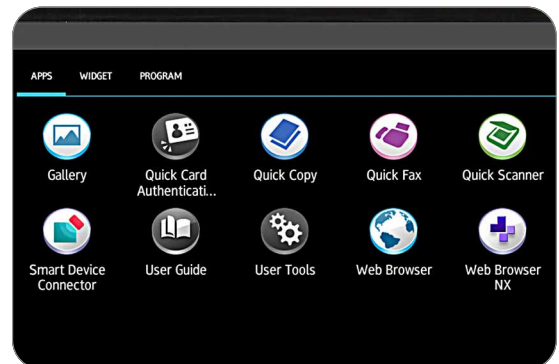
## Tap into a new way to work

Complete more jobs quickly via innovative RICOH Workstyle Innovation Technology. We have removed all hard keys on the large 10.1" touchscreen Smart Operation Panel, so you can use the same scrolling and pinch-and-flick movements you use on your personal mobile device to access settings, change details and transition between jobs and tasks. Users can choose from multiple interfaces. Simply tap an icon to perform primary tasks such as copying, scanning or faxing with a single touch. Choose an intuitive, straightforward grid layout to access critical information quickly and go into details without extensive searches or delays. You can even opt for the look of our classic control panels and pack more information onto a single screen.



## Customize how your work flows

You know what needs to be done. With the MP C6503SP/MP C8003SP, you will know exactly how to do it faster. Create iconic one-touch shortcuts for frequently used workflows. If you know you will be sending a weekly newsletter to clients, create a workflow for it and avoid repetitive manual input. Simply press the customized icon, grab your file or scan the document and your list of recipients populates automatically. For other specialized functions, choose from a wide range of downloadable workflow apps and customize the control panel to fit your unique needs. Do you handle a lot of two-sided forms, such as insurance cards? Use the ID Card Copy app and scan them onto a single-sided document. Opt for other apps, including Scan-to-Folder Helper, Printer Native, Conference Concierge, Shared Folder Print and Easy Book Copy, just as easily.



## Put critical information within your reach

Searching for answers is easier when you know where to look. Find critical information in moments with the MP C6503SP/MP C8003SP. Store up to 3,000 frequently used files on the Document Server. Select the one you need with a single tap on the Smart Operation Panel. You can also take advantage of optical character recognition (OCR) to place metadata on documents, images and PDF files — and search for them via keywords. Utilize the embedded web browser or Cloud-based applications to work with important information, images, documents, and more.

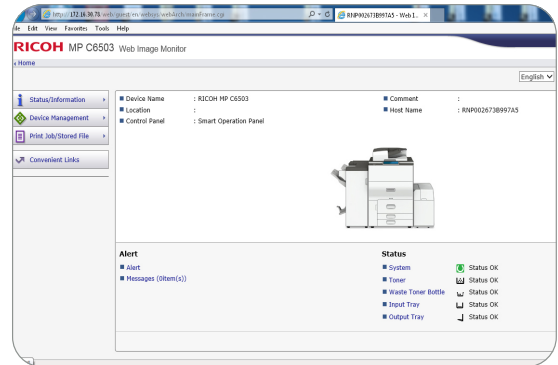




# Control information and costs throughout the enterprise

## Make smarter administrative decisions

Get closer to optimal performance even when you are far away. Capture critical information remotely to make more informed administrative decisions for your entire fleet. Use RICOH @Remote™\* to monitor the status of every device and collect critical information and meter reads in real time, so you can identify and resolve issues before they compromise productivity. Use RICOH Device Manager NX\* to manage configurations and updates in moments via any web browser. Detect, install or update print drivers automatically with RICOH Device Software Manager.



## Bring accountability to the enterprise

The most effective messages are targeted for specific audiences. Why risk losing them before they get there? With user authentication, users must login using a passcode on the control panel or present their ID or proximity card to the optional NFC Card Reader to access critical information and perform MFP functions. Use it to track specific projects to identify bottlenecks and unnecessary printing. Plus, you can pair the MFP with RICOH Streamline NX®\* and issue chargebacks to specific users and workgroups. Take advantage of Locked Print to keep each job in the print queue — and out of the hands of passersby — until the authorized user releases them. Add a watermark to documents to prevent unauthorized users from trying to copy confidential information. In addition, the device offers powerful data encryption and automatic latent data overwrite to help protect information on the hard drive.



## Opening up new ways to interact

In addition to a wealth of other functions, these devices come with Human Detection Sensor for improved productivity. The MFPs jump into action as you approach, so you spend less time waiting for the machine to warm up. MP C6503SP/MP C8003SP also consume less power in the ECO friendly sleep mode, which means you not only save time, you can also save money on operating costs.



\*Optional



## Enhanced technology means professional results

### Every innovation adds up

To ensure seamless workflow, we've incorporated a range of innovations to make everything more efficient. Technology like LED recognition lights help you spot the location of any issue – enabling more uptime – large capacity trays keep the work moving, and you even get banner print capability via a bypass tray.



### Speed and style

With two speeds on offer, 65ppm and 80ppm respectively, each device is perfectly suited for a range of fast-paced environments. And when you combine these speeds with all the reliability and output quality you'd expect from a revolutionary Colour MFP printer, you get devices that are ideal for flexible and high volume-working.



### The perfect finish

MP C6503SP/MP C8003SP offer innovative finishers and a multi-folding unit which can prepare documents in a variety of styles, including tri-fold, z-fold and gatefold. A new feature allows prints to include three-edge, full-bleed printing for brochures and booklets.



## Your innovative workflow solution



1 Intuitive 10.1 inch colour Smart Operation Panel

2 High paper tray capacity of up to 8,100 sheets

3 Multi-folding unit which has a variety of options

4 Single Pass Document Feeder for high speed

5 Banner print capabilities

6 Human Detection Sensor allows quick warm up

7 2,000 sheet booklet finisher with 65 sheet

# RICOH MP C6503SP/MP C8003SP

## MAIN SPECIFICATIONS

GENERAL	
Warm-up time:	38 seconds
First output speed:	Full colour : 7.5 / 6.3 seconds B/W : 5.5 / 4.7 seconds
Continuous output speed:	Full colour : 65 / 80 ppm B/W : 65 / 80 ppm
Memory:	Standard : 4 GB
HDD:	640 GB
Dimensions (W x D x H):	750 x 880 x 1,225 mm
Weight:	250 kg
Power source:	220 - 240 V, 50/60 Hz

COPIER	
Copying process:	4-Drum Dry Electrostatic Transfer System with internal transfer belt
Multiple copying:	Up to 9,999 copies
Resolution:	600 dpi
Zoom:	From 25% to 400% in 1% steps

PRINTER	
Printer language:	Standard : PCL5c, PCL6, PDF Direct Option : Adobe® PostScript®3™, XPS, IPDS
Print resolution:	1,200 x 4,800 dpi
Interface:	Standard : SD slot, USB Host Interface, Ethernet 10 base-T/100 base-TX/1000 base-T, *Bluetooth and Wireless LAN (IEEE 802.11 a/b/g/n) <i>*on Smart Operation Panel</i> Option : Bi-directional IEEE 1284, Wireless LAN (IEEE 802.11a/b/g/n), USB 2.0 (Type B)
Network protocol:	TCP/IP (IP v4, IP v6)
Windows® environments:	Windows® Vista/7/8/8.1/10, Windows® Server 2008/2008R2/2012/2012R2
Mac OS environments:	Macintosh OS X v10.7 or later
UNIX environments:	UNIX Sun® Solaris, HP-UX, SCO OpenServer, RedHat® Linux, IBM® AIX
SAP® R/3® environments:	SAP® R/3®
Other supported environments:	AS/400® using OS/400 Host Print Transform, IBM iSeries

SCANNER	
Scanning speed:	Max. 120 (simplex) / 220 (duplex) originals per minute
Resolution:	Maximum : 600 dpi
Original size:	A3, A4, A5, B4, B5, B6
Bundled drivers:	Network TWAIN
Scan to:	E-mail, Folder, USB, SD card, SMB, FTP, mobile device (with RICOH App)

FAX	
Circuit:	PSTN, PBX
Compatibility:	ITU-T (CCITT) G3
Resolution:	Standard : 8 x 3.85 line/mm, 200 x 100 dpi Detail : 8 x 7.7 line/mm, 200 x 200 dpi Super fine : 8 x 15.4 line/mm, 400 x 400 dpi, 16 x 15.4 line/mm, 400 x 400 dpi
Compression method:	MH, MR, MMR, JBIG
Transmission speed:	G3 : 2 second(s) (200 x 100 dpi, JBIG), 3 second(s) (200 x 100 dpi, MMR)
Modem speed:	Maximum : 33.6 Kbps
Memory capacity:	Standard : 4 MB Maximum : 8 MB

PAPER HANDLING	
Recommended paper size:	SRA3, A3, A4, A5, A6, B4, B5, B6
Paper input capacity:	Standard : 3,700 sheets Maximum : 8,100 sheets
Paper output capacity:	Standard : 500 sheets Maximum : 3,500 sheets
Paper weight:	Paper tray(s) : 52.3 - 256 g/m <sup>2</sup> Bypass tray : 52.3 - 300 g/m <sup>2</sup> Duplex : 52.3 - 256 g/m <sup>2</sup> A4/LT LCT : 52.3 - 216 g/m <sup>2</sup> A3/DLT LCT : 52.3 - 300 g/m <sup>2</sup>

ECOLOGY	
Power consumption:	Maximum : 2,400 W Ready mode : 198 / 199 W Low power mode : 181 / 182 W Sleep mode : Less than 0.89 W TEC (Typical Electricity Consumption): 4.8 / 6.2 kWh

OPTIONS	
4,400-sheet A4 large capacity tray, 2,200-sheet SRA3 large capacity tray, 3,000-sheet finisher with 65-sheet stapler, 3,000-sheet finisher with 100-sheet stapler, 2,000-sheet booklet finisher, Punch kits, 9-bin mailbox, Cover interposer, Tab Sheet Holder, Copy tray, Jogger unit, Bi-directional IEEE 1284, Wireless LAN (IEEE 802.11a/b/g/n), Adobe® PostScript®3™, IPDS unit, Counter interface, File format converter, Card reader bracket, Fax Connection Unit, Fax memory, Fax option, Multi folding unit, Unicode Font Package for SAP, OCR Unit, Cooling Fan Unit, Enhanced security HDD, External keyboard bracket, NFC Card Reader, Banner paper tray guide, G3 Interface unit, Extended USB board, Card Reader Cover, USB device server, A3/11"x17" Tray Unit.	

For availability of models, options and software, please consult your local supplier.

**RICOH**  
imagine. change.

[www.ricoh-ap.com](http://www.ricoh-ap.com)

RICOH ASIA PACIFIC PTE LTD

103 Penang Road #08-01/07, VISIONCREST Commercial, Singapore 238467  
Phone: +65 6830 5888, Fax: +65 6830 5830

All brand and/or product names are trademarks of their respective owners. Specifications and external appearance are subject to change without notice. The colour of the actual product may vary from the colour shown in the brochure. The images in this brochure are not real photographs and slight differences in detail might appear. Copyright © 2020 Ricoh Asia Pacific Pte Ltd. All rights reserved. This brochure, its contents and/or layout may not be modified and/or adapted, copied in part or in whole and/or incorporated into other works without the prior written permission of Ricoh Asia Pacific Pte Ltd.



RICOH @Remote

